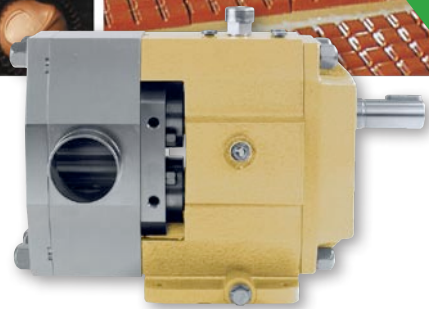




JOHNSON PUMP
AN SPX BRAND

Sweet move for Johnson Pump

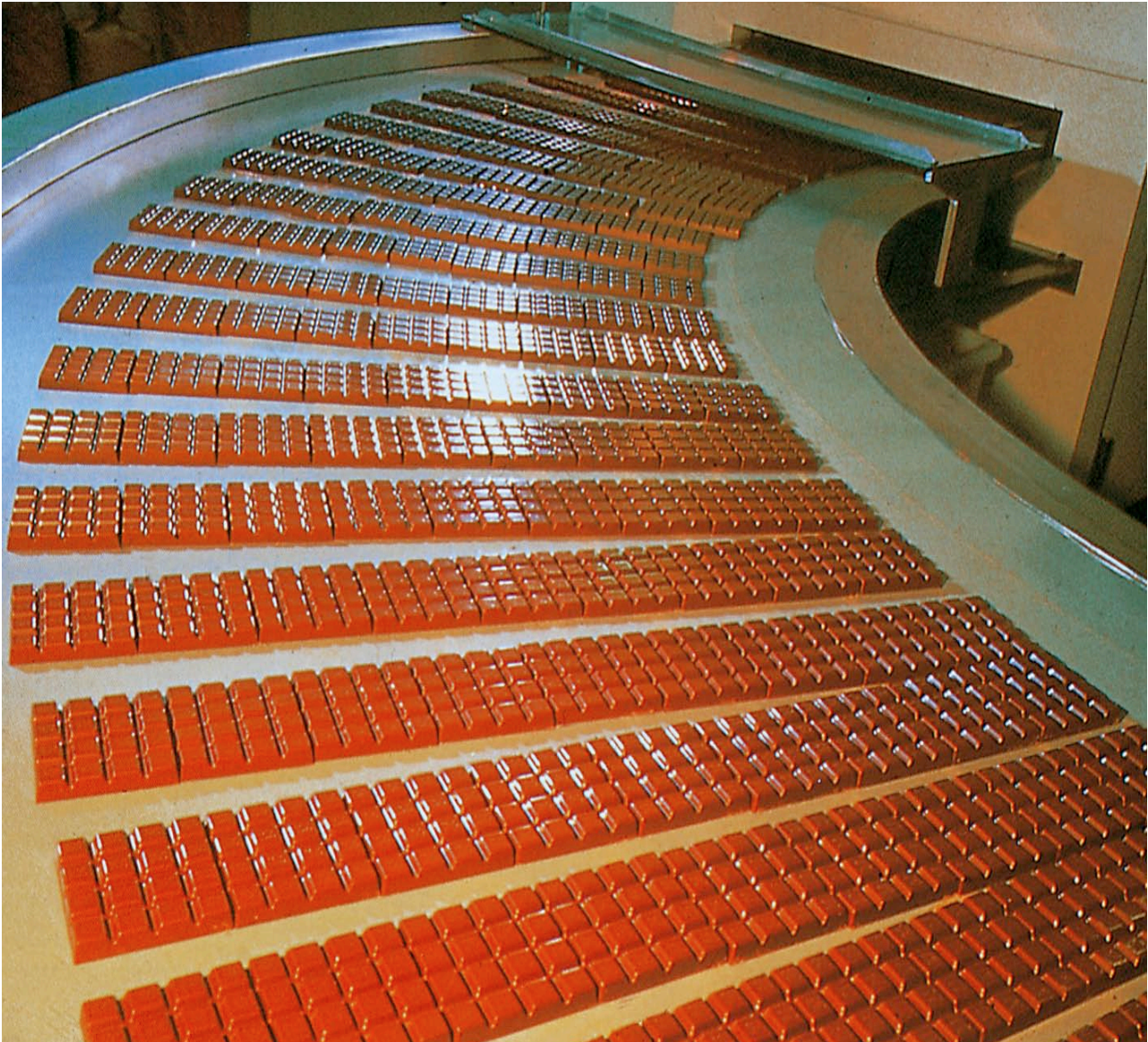


SPX[®]

What is stirring you?

Whether you pump jam or highly concentrated dissolved sugar, milk chocolate with whole nuts or jelly babies, Johnson Pump, an SPX Process Equipment Operation, can provide the solution to transport various liquids you handle.

With many years of experience working in areas demanding gentle product handling and hygienic design Johnson Pump has a variety of pumping options to suit your needs.



Cocoa liquor
Lecithin
Cocoa butter
Chocolate
Milk
Emulsifying agents
Butter

Waffle dough
Sorbitol
White chocolate
Caramels
Condensed milk
Gum Arabic
Coverings

Honey
Flavours
Vegetable oil
Pudding
Nougat
Marmalade
Dissolved sugar

Toffees
Gelatine
Fudge
Melange
Glucose syrup
Cream
Fondant

We will move it!

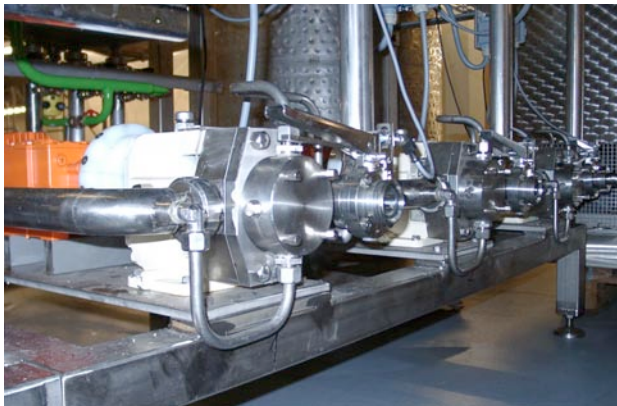


REVERSIBLE PUMPS ON LOADING AND UNLOADING DUTIES

- ✓ Simplified pipe works.
- ✓ Fewer valves.
- ✓ Strips lines.
- ✓ Self priming available.
- ✓ Wide range of applications by variable speed.
- ✓ Constant and smooth flow.
- ✓ Bi-rotational.

SPECIAL PUMP DESIGN FOR SUGAR CONFECTIONERY AND CHOCOLATE MANUFACTURE

- ✓ With the option of a variety of different ranges of positive displacement pumps.
- ✓ Choice of specific materials of construction.
- ✓ Hygienic pump design for CIP and SIP or manual cleaning.
- ✓ Compact pump units, tailored to your specific needs.

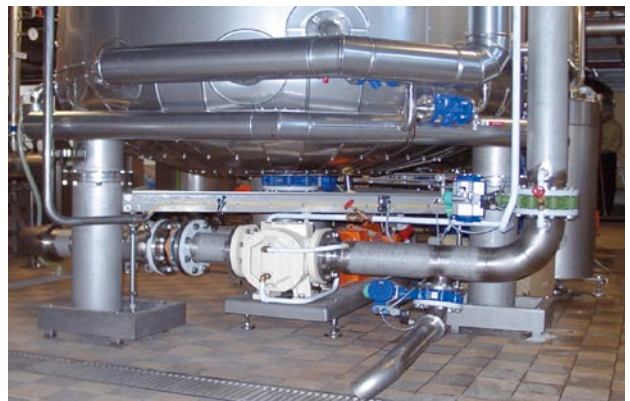


SOLVING PROBLEMS FOR YOUR SYSTEM

- ✓ Easily serviced maintained with long intervals.
- ✓ Long life components for high availability.
- ✓ Competent advice and consultation.
- ✓ Johnson Pump can advice on system design to ensure that you obtain the lowest life cycle cost.
- ✓ Johnson Pump has always the right solution for your specific demands.

PUMPING OF HIGH AND LOW VISCOUS LIQUIDS

- ✓ Proportional pumping over a wide range of viscosity.
- ✓ Variable speed and regulation for special capacity.
- ✓ Gentle product handling.
- ✓ Low energy costs and a high level of hydraulic efficiency.
- ✓ Pumping final products with solid particles like fruits and cereals.



We are capable of moving more...



Your local contact:



SPX Process Equipment AB
Nastagatan 19, Box 1436
SE-701 14 Örebro, SWEDEN
Phone: +46 (0)19 21 83 00. Fax: +46 (0)19 27 23 72
E-Mail: jp@spx.com



For more information about our worldwide locations, approvals, certifications, and local representatives, please visit www.johnson-pump.com and www.spxpe.com.

SPX Corporation reserves the right to incorporate our latest design and material changes without notice or obligation. Design features, materials of construction and dimensional data, as described in this bulletin, are provided for your information only and should not be relied upon unless confirmed in writing.